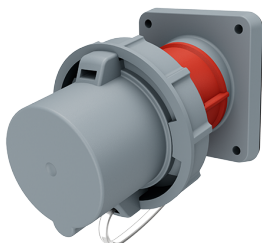


Panel mounted inlet

Part no. 1256

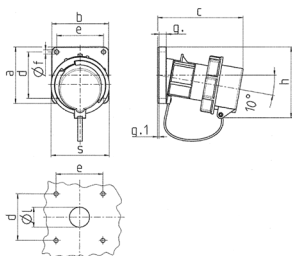


- screw terminals
- with protective cover

Technical specifications

Ampere	63 A
Poles	4 p
Voltage	400 V
Clock position	6 h
Hertz	50-60 Hz
Connection technology	Screw terminals
Contact	standard
Protection type	IP67
Weight	659 g
Certifications	EAC

Drawing



Drawing	Amp.	16			32			63				
		Poles		3	4	5	3	4	5	3	4	5
2 MB 62												
Dim. in mm												
a		85	85	85	85	85	108	108	108			
b		85	85	85	85	85	101	101	101			
c		132	132	131	131	137	164	164	164			
d		70	70	70	70	70	85	85	85			
e		70	70	70	70	70	77	77	77			
f		6.3	6.3	6.3	6.3	6.3	6.5	6.5	6.5			
g.		11	11	11	11	11	12	12	12			
g.1		2	2	2	2	2	2	2	2			
h		100	107	108	108	111	130	130	130			
s		70	87	94	94	102	114	114	114			
l		30	30	30	30	30	40	40	40			
Terminal for cond. cross		1	1	2,5	2,5	2,5	6	6	6			
section (mm ²) min.-max.		-2,5	-2,5	-6	-6	-6	-16	-16	-16			